



Quality Control Chart

Getting Started Guide

Revision 1

March 14, 2015

By

CHEMIASOFT TEAM

www.chemiasoft.com

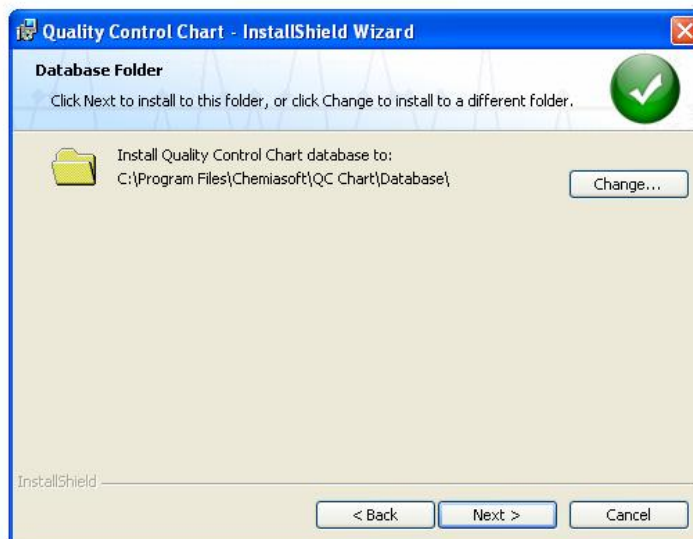
*Note: There might be some differences between this manual and the software due to continuous development.
For the latest version of this manual please refer to online version.*

Installation

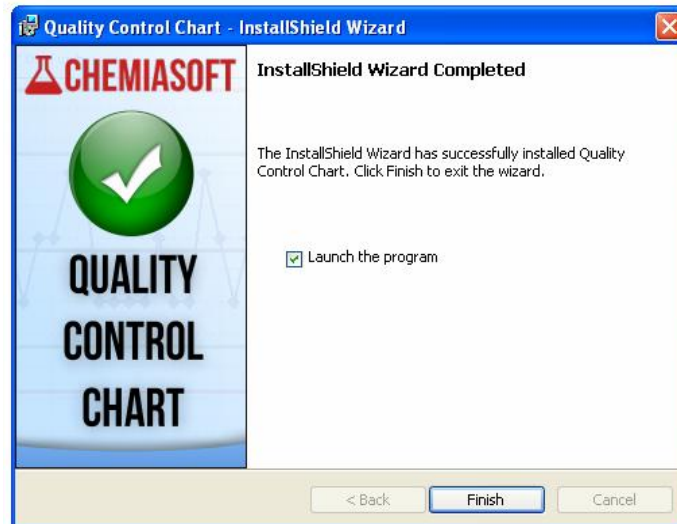
1. To install **Quality Control Chart** software, download the latest version from website <http://chemiasoft.com/qcchart.html>
2. When download complete, run setup file and go through the installation process by keep pressing **Next** until installation complete.



3. While installation process in progress, you will be prompted to define the database location, the default location is already set up. If you want to change database location press **Change** button.

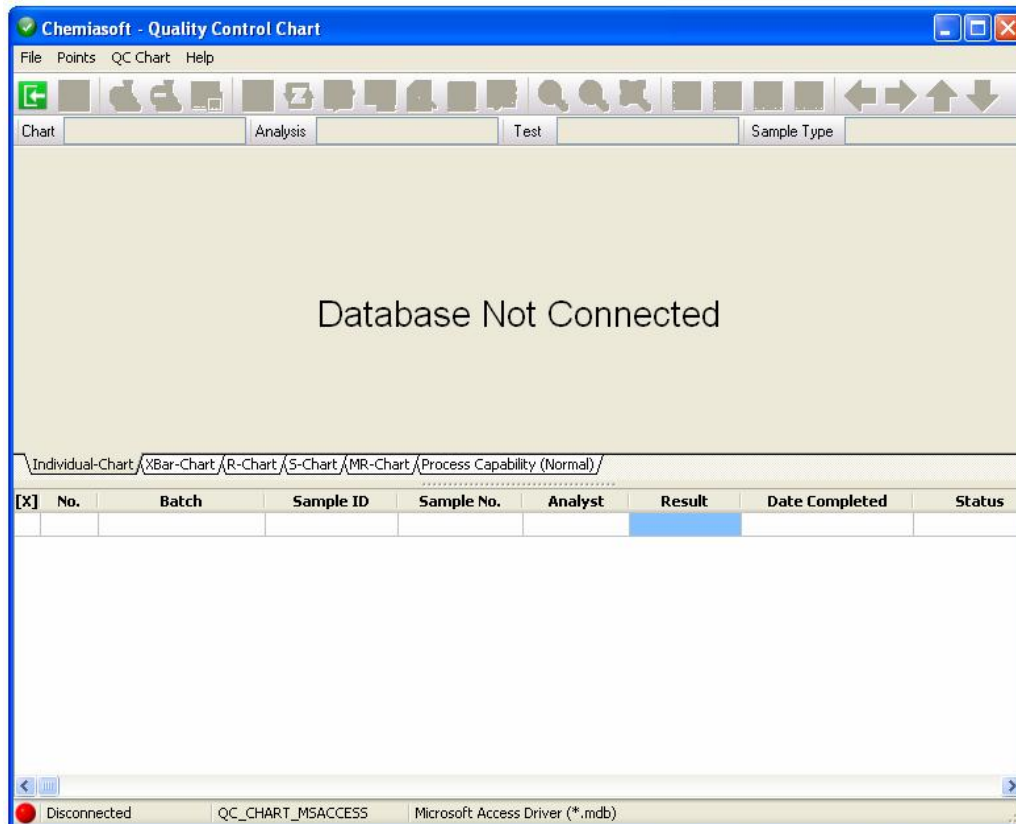


4. Continue installation until you reach to the last screen. Check **Lunch the program** and press **Finish**.

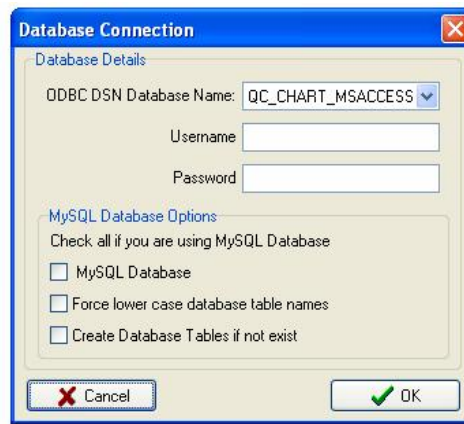


Start up the Quality Control Chart

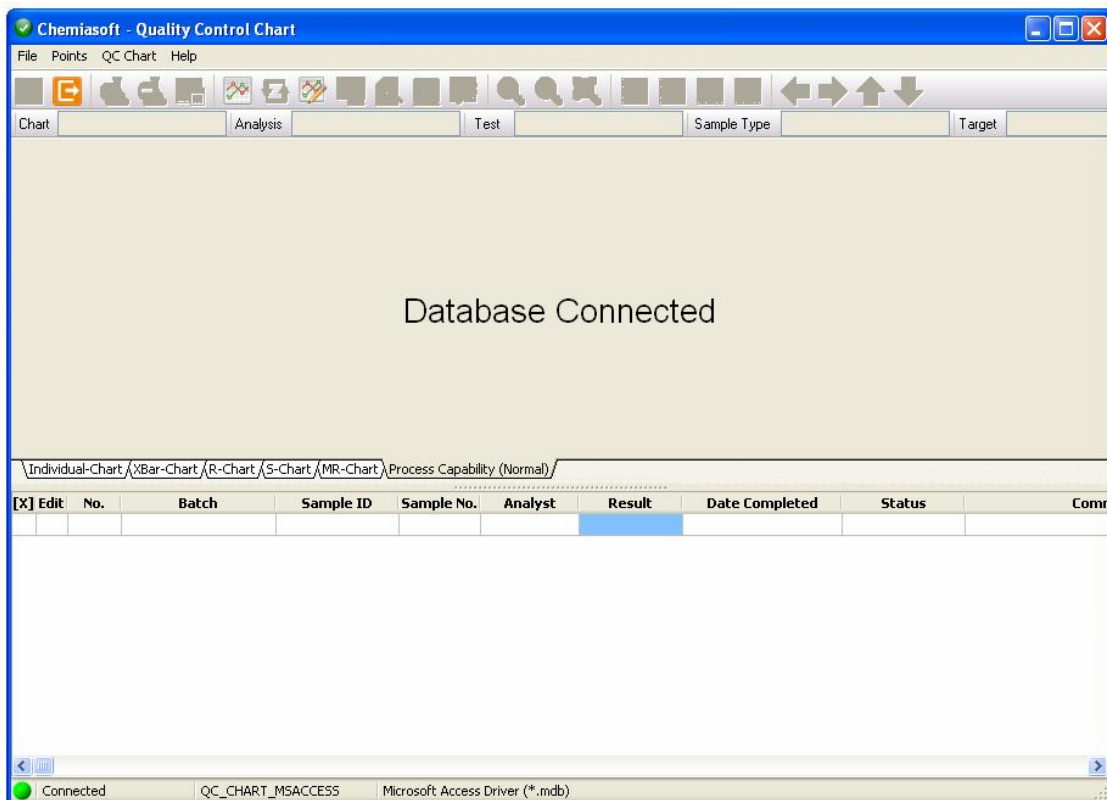
1. After installation of the software complete, run **Quality Control Chart** from desktop icon or from start menu. Once the software start the main software screen will appear



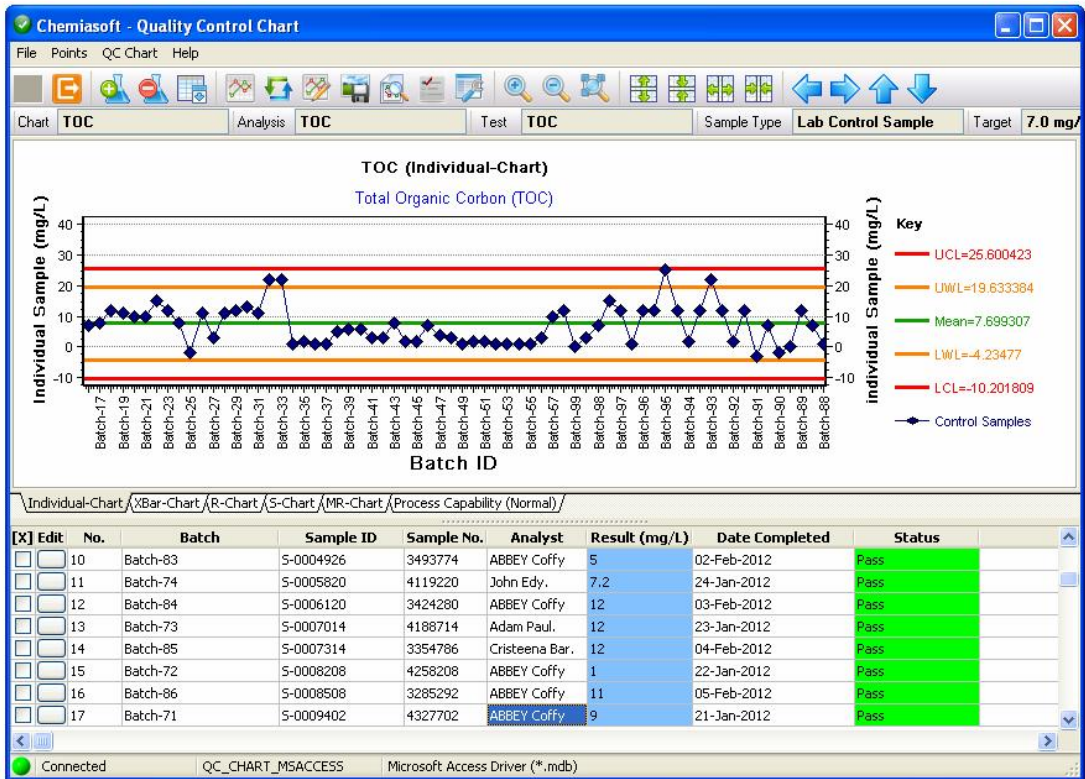
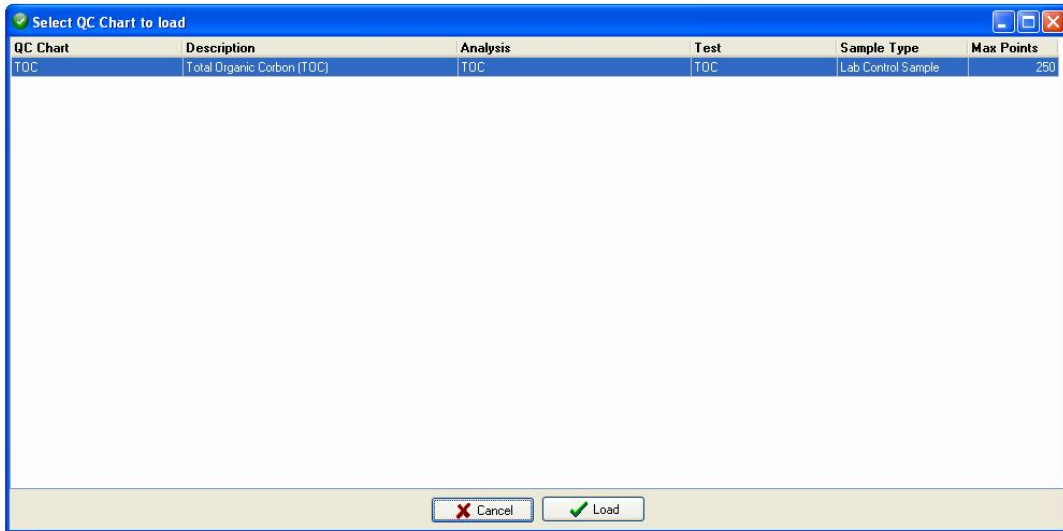
2. Once the main screen appeared, it will show **“Database Not Connected”**. Go to menu **File >> Connection Properties**. Database connection dialog will show up



3. On the **ODBC DSN Database Name** drop down box select **"QC_CHART_MSACCESS"**. By default **MS Access** database is checked.
4. On the **MySQL Database options** uncheck all check boxes similar to screenshot above.
5. Press **OK**.
6. On the main software screen go to menu **File >> Login** or press **Login** button from the toolbar. The software will connect to the defined database. The main screen will show **Database Connected**.



7. The software shipped with one example QC Chart, to open example chart go to menu **QC Chart >> Load QC Chart**, from loading QC chart select **TOC chart** and click load. The **TOC chart** will be loaded.



Create Your First QC Chart

We will show now how to create you first **QC Chart** for test name pH and import all data to your new created pH QC Chart using table import.

1. From the main software window click on **QC Chart** menu and select **Create/Modify QC Chart**. **Edit** dialog will appear:

No.	QC Chart	Description
1	TOC	Total Organic Carbon (TOC)

Chart Title: TOC

General

Name: TOC

Description (header): Total Organic Carbon (TOC)

Analysis: TOC

Test: TOC

Sample Type: Lab Control Sample

Target Result: 7.0 Unit: mg/L

LSL: 0 USL: 40

Chart Footer:

Sort Data

Sorted

Sort By: QC Sample ID

Sort A-Z: ASC

Date Completed Range

Cover range date

From: 12/30/1899 To: 12/30/1899

Maximum Number of Records

Show Top: 250 Points

2. Go to menu **Edit >> New**.

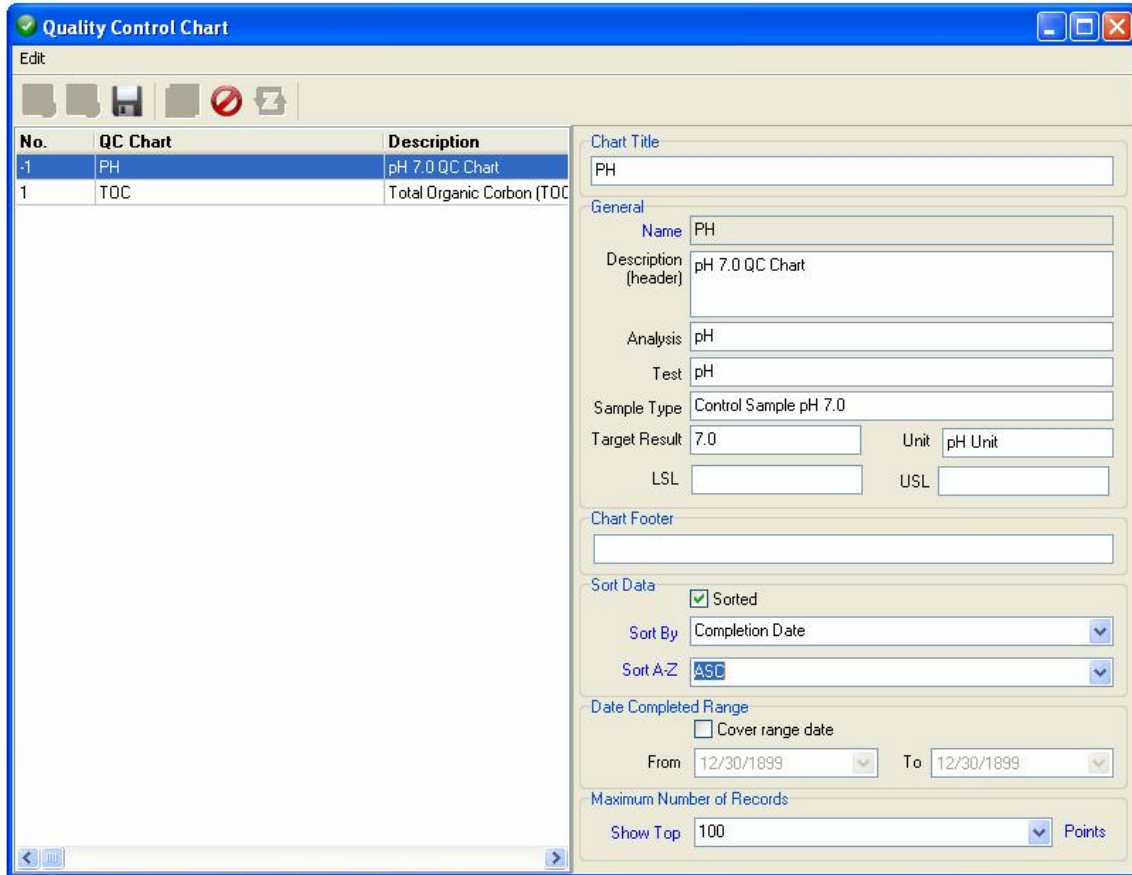
New QC Chart

Name: []

Cancel OK

3. Enter the name of the QC Chart you are going to create. The name must be unique. In the text box enter **"PH"** and press **OK**. On charts list you will see the new chart is highlighted and on the right side details to fill.

On the right side area fill the information as below. Once you complete press **Save** button from toolbar.

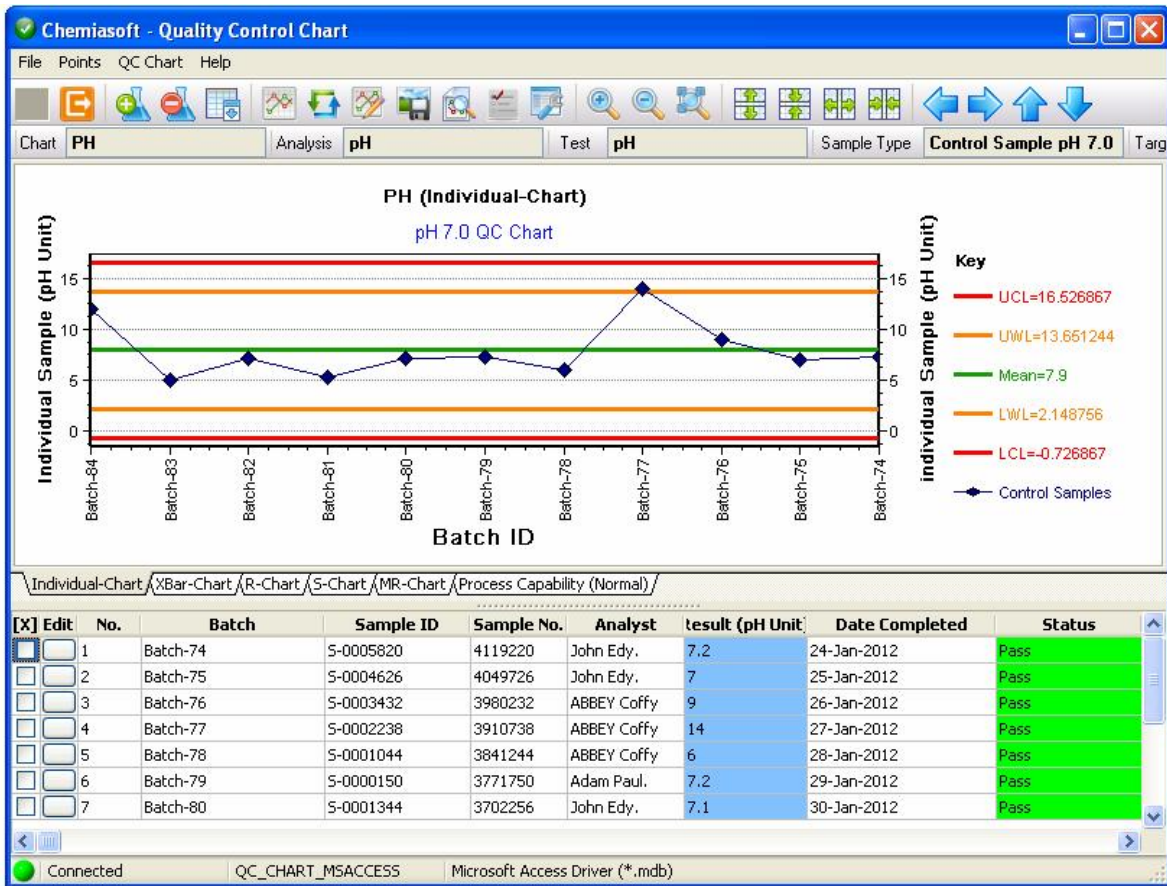


4. Close QC chart list window and go back to the main software window.
5. Load the QC Chart you just created, from menu **QC Chart >> Load QC Chart**. Select chart **"PH"** and press **Load** button.
6. Once you load the QC Chart you can start add data to the chart. You will now import data to the newly QC chart you just created. Go to menu **File >> Import Data >> from Table**. Import data table window will appear.
7. Enter some data similar to below table or use excel to copy/paste:

Batch ID	Sample ID	Sample No.	Analyst	Result Value	Date Completed	Status
Batch-79	S-0000150	3771750	Adam Paul.	7.2	1/29/2012	Pass
Batch-78	S-0001044	3841244	ABBEY Coffy	6	1/28/2012	Pass
Batch-80	S-0001344	3702256	John Edy.	7.1	1/30/2012	Pass
Batch-77	S-0002238	3910738	ABBEY Coffy	14	1/27/2012	Pass
Batch-81	S-0002538	3632762	John Edy.	5.3	1/31/2012	Pass
Batch-76	S-0003432	3980232	ABBEY Coffy	9	1/26/2012	Pass
Batch-82	S-0003732	3563268	ABBEY Coffy	7.1	2/1/2012	Pass
Batch-75	S-0004626	4049726	John Edy.	7	1/25/2012	Pass
Batch-83	S-0004926	3493774	ABBEY Coffy	5	2/2/2012	Pass
Batch-74	S-0005820	4119220	John Edy.	7.2	1/24/2012	Pass
Batch-84	S-0006120	3424280	ABBEY Coffy	12	2/3/2012	Pass

	Batch ID	QC Sample ID	QC Sample No.	Analyst	Result	Date Completed	Batch Status	Ca
1	Batch-79	S-0000150	3771750	Adam Paul.	7.2	1/29/2012	Pass	
2	Batch-78	S-0001044	3841244	ABBEY Coffy	6	1/28/2012	Pass	
3	Batch-80	S-0001344	3702256	John Edy.	7.1	1/30/2012	Pass	
4	Batch-77	S-0002238	3910738	ABBEY Coffy	14	1/27/2012	Pass	
5	Batch-81	S-0002538	3632762	John Edy.	5.3	1/31/2012	Pass	
6	Batch-76	S-0003432	3980232	ABBEY Coffy	9	1/26/2012	Pass	
7	Batch-82	S-0003732	3563268	ABBEY Coffy	7.1	2/1/2012	Pass	
8	Batch-75	S-0004626	4049726	John Edy.	7	1/25/2012	Pass	
9	Batch-83	S-0004926	3493774	ABBEY Coffy	5	2/2/2012	Pass	
10	Batch-74	S-0005820	4119220	John Edy.	7.2	1/24/2012	Pass	
11	Batch-84	S-0006120	3424280	ABBEY Coffy	12	2/3/2012	Pass	
12								
13								
14								
15								
16								
17								

8. The green cells means you value format is **OK** and it can be imported. Any row contains red cells will not be imported.
9. Go to menu **Import >> Import All**. Importing process will start and message will appear once importing is completed. All imported rows will be flag by star (*) to indicate they imported. You can import 1000 points at time, importing process may take time depends on your connection with server. If your connection very slow, you may feel the software hang or not responding. Please wait until finished importing process.
10. When importing process complete, close import table window and go back to the main window. Reload chart, go to menu **QC Chart >> Reload QC Chart** or Press F5.
11. Now the new pH QC chart has some data and it looks like below:



The QC limits values appear on the right side and it is automatically calculated.

That is all for now. Please refer to the **User Guide** for more details. If you can't find answer of your question, please contact us by sending an email to support@chemiasoft.com